

MPI-120

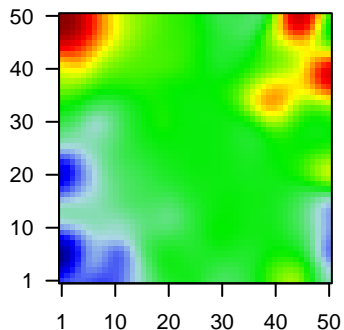
Global Summary

%DE = 0.05
 # genes with fdr < 0.2 = 558 (255 + / 303 -)
 # genes with fdr < 0.1 = 434 (200 + / 234 -)
 # genes with fdr < 0.05 = 316 (141 + / 175 -)
 # genes with fdr < 0.01 = 204 (87 + / 117 -)

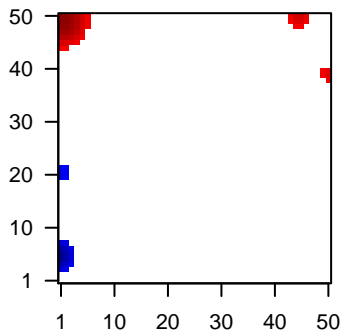
 # genes in genesets = 13152

<FC> = 0
 <t-score> = 0.06
 <p-value> = 0.26
 <fdr> = 0.95

Portrait



Regulated Metagenes



Global Genelist

Rank	ID	log(FC)	fdr	Description
		p-value		Metagene
1	39318_at	1.14	2e-16	5e-13 46 x 49 T cell leukemia/lymphoma 1A [Source:HGNC Symbol;Acc:HGNC:1166]
2	201909_at	1.48	2e-16	5e-13 43 x 49 ribosomal protein S4, Y-linked 1 [Source:HGNC Symbol;Acc:HGNC:1166]
3	204562_at	-1.58	2e-16	5e-13 0 x 20 interferon regulatory factor 4 [Source:HGNC Symbol;Acc:HGNC:1166]
4	209374_s_at	-1.94	2e-16	5e-13 0 x 22 immunoglobulin heavy constant mu [Source:HGNC Symbol;Acc:HGNC:1166]
5	211675_s_at	-1.48	2e-16	5e-13 0 x 5 MyoD family inhibitor domain containing [Source:HGNC Symbol;Acc:HGNC:1166]
6	212827_at	-1.64	2e-16	5e-13 41 x 44 immunoglobulin heavy constant mu [Source:HGNC Symbol;Acc:HGNC:1166]
7	213831_at	-1.63	2e-16	5e-13 49 x 16 major histocompatibility complex, class II, DQ alpha 1 [Source:HGNC Symbol;Acc:HGNC:1166]
8	215118_s_at	1.99	2e-16	5e-13 28 x 1
9	215379_x_at	-1.04	2e-16	5e-13 41 x 42 immunoglobulin lambda constant 2 [Source:HGNC Symbol;Acc:HGNC:1166]
10	217022_s_at	1.5	2e-16	5e-13 0 x 2 immunoglobulin heavy constant alpha 2 (A2m marker) [Source:HGNC Symbol;Acc:HGNC:1166]
11	205242_at	-1.33	4e-16	5e-12 0 x 3 C-X-C motif chemokine ligand 13 [Source:HGNC Symbol;Acc:HGNC:1166]
12	222146_s_at	-1.11	4e-16	5e-12 0 x 21 transcription factor 4 [Source:HGNC Symbol;Acc:HGNC:1166]
13	212387_at	-1.13	7e-16	4e-11 0 x 21 transcription factor 4 [Source:HGNC Symbol;Acc:HGNC:1166]
14	209590_at	2.09	3e-15	4e-11 45 x 49 bone morphogenetic protein 7 [Source:HGNC Symbol;Acc:HGNC:1166]
15	209995_s_at	1.21	6e-15	4e-11 46 x 49 T cell leukemia/lymphoma 1A [Source:HGNC Symbol;Acc:HGNC:1166]
16	213891_s_at	-1.03	7e-15	8e-11 0 x 22 transcription factor 4 [Source:HGNC Symbol;Acc:HGNC:1166]
17	203186_s_at	-1.05	1e-14	4e-10 0 x 3 S100 calcium binding protein A4 [Source:HGNC Symbol;Acc:HGNC:1166]
18	209193_at	-1.2	3e-14	1e-09 0 x 20 Pim-1 proto-oncogene, serine/threonine kinase [Source:HGNC Symbol;Acc:HGNC:1166]
19	209480_at	-1.68	1e-13	1e-09 49 x 16 major histocompatibility complex, class II, DQ beta 1 [Source:HGNC Symbol;Acc:HGNC:1166]
20	213924_at	1.95	2e-13	8e-09 15 x 6 G protein subunit alpha L [Source:HGNC Symbol;Acc:HGNC:1166]

Global Geneset Analysis

Rank	GSZ	p-value	#all	Geneset
<i>Overexpressed</i>				
1	11.09	NULL	5716	Chromatin states peripheral blood_4_Tx
2	10.77	NULL	4528	Chromatin states naive cells peripheral blood_4_Tx
3	10.09	NULL	4683	Chromatin states fetal_midbrain_HetRpts
4	9.48	NULL	5601	Chromatin states cells peripheral blood_4_Tx
5	9.27	NULL	5456	Chromatin states Neuronal_Progenitor
6	9.22	NULL	5753	Chromatin states peripheral blood_4_Tx
7	8.72	NULL	6997	Chromatin states fetal_midbrain_K9K27me3
8	8.69	NULL	6099	Chromatin states Tx
9	8.6	NULL	5527	Chromatin states regulatory cells peripheral blood_4_Tx
10	8.58	NULL	3767	Chromatin states peripheral blood_6_EnhG
11	8.48	NULL	5766	Chromatin states killer cells peripheral blood_4_Tx
12	8.17	NULL	17	Lymphoma_kkema_BCL2 UP_BCL6 DN
13	8.02	NULL	110	BP translational initiation
14	7.93	NULL	6068	Chromatin states ESC_Endoderm
15	7.93	NULL	9	GSEA C2RUNNE_GENDER_EFFECT_UP
16	7.8	NULL	7833	Chromatin states peripheral blood_1_TssA
17	7.67	NULL	728	GSEA C2RIGE_RESPONSE_TO_TOSEDOSTAT_24HR_DN
18	7.64	NULL	7420	Chromatin states peripheral blood_1_TssA
19	7.61	NULL	3938	Chromatin states cells peripheral blood_6_EnhG
20	7.59	NULL	5738	Chromatin states peripheral blood_4_Tx
<i>Underexpressed</i>				
1	-13.35	NULL	85	Lymphoma_kkema_DLCL UP
2	-12.37	NULL	317	Cancer SPANG_BCL6-index2
3	-12.07	NULL	85	Lymphoma_kkema_BCL2 DN_BCL6 UP
4	-11.2	NULL	10	Lymphoma_kkema_ASCQUE_ABC UP
5	-10.12	NULL	22	Lymphoma_kkema_NFKB BL DN
6	-9.64	NULL	186	Cancer SPANG_LPS-index2
7	-9.25	NULL	18	Lymphoma_kkema_RIGHT_ABC UP
8	-8.87	NULL	1611	CC extracellular region
9	-8.79	NULL	1930	Chromatin states TssA
10	-8.65	NULL	314	GSEA C2INDGREN_BLADDER_CANCER_CLUSTER_1_DN
11	-8.64	NULL	480	Cancer Lembcke_Colonc Inflammation
12	-8.63	NULL	173	Lymphoma_kkema_Light zone signature
13	-8.5	NULL	269	Glioma_ScoV_0.5_Sturm_C3_Mesenchymal_DN
14	-8.35	NULL	447	Glioma_ScoV_0.999_Sturm_E4_Mesenchymal_RTK I' PDGFRA' DN
15	-8.24	NULL	14	GSEA C2HUMMEL_BURKITT'S_LYMPHOMA_DN
16	-8.17	NULL	1090	CC extracellular space
17	-7.98	NULL	353	Lymphoma_kkema_SPANG_CD40 6hrs DN
18	-7.92	NULL	431	GSEA C2SOBERT_OLIGODENDROCYTE_DIFFERENTIATION_UP
19	-7.88	NULL	90	GSEA C2BASSO_CD40_SIGNALING_UP
20	-7.87	NULL	319	Melanoma_Gerber_wt/wt_melanoma-cells-SpotA

p-values

